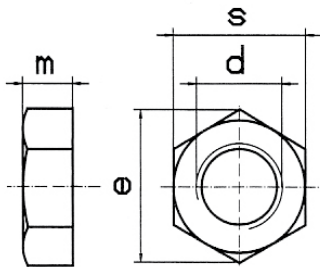


Rohrmuttern
pipe thread nuts

DIN 431



| d | m min. | s | | | | | | | Stahl | MS |
|---------|--------|---------|--|--|--|--|--|--|-------|----|
| R 1/8 | 6 | 19 18 | | | | | | | LG | LG |
| R 1/4 | 6 | 22 21 | | | | | | | LG | LG |
| R 3/8 | 7 | 27 | | | | | | | LG | LG |
| R 1/2 | 8 | 32 34 | | | | | | | LG | LG |
| R 3/4 | 9 | 36 | | | | | | | LG | LG |
| R 1 | 10 | 46 | | | | | | | LG | LG |
| R 1 1/4 | 11 | 55 | | | | | | | LG | LG |
| R 1 1/2 | 12 | 60 | | | | | | | LG | LG |
| R 1 3/4 | 13 | 70 | | | | | | | LG | |
| R 2 | 13 | 75 | | | | | | | LG | LG |

LG - Lagerartikel - Preise auf Anfrage

Werkstoff: Stahl - Stahl entsprechend Normvorschrift auch V2A und V4A am Lager

Werkstoff: MS - Messing entsprechend Normvorschrift

WWW.GLOBEX-GMBH.DE

WWW.GLOBEX-GMBH.DE

WWW.GLOBEX-GMBH.DE

WWW.GLOBEX-GMBH.DE