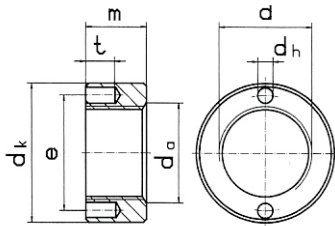


## Zweilochmuttern

round nuts with drilled holes in one face

**DIN 547**



| d         | M 3       | M 4       | M 5       | M 6       | M 8       | M 10      |  |  |  |  |  |  |
|-----------|-----------|-----------|-----------|-----------|-----------|-----------|--|--|--|--|--|--|
| d h min.  | 1,5       | 1,5       | 2         | 2,5       | 3         | 3,5       |  |  |  |  |  |  |
| d k min.  | 8         | 10        | 12        | 14        | 18        | 22        |  |  |  |  |  |  |
| m min.    | 72,10     | 79,25     | 82,85     | 118,65    | 143,70    | 214,25    |  |  |  |  |  |  |
| <b>LG</b> | <b>LG</b> | <b>LG</b> | <b>LG</b> | <b>LG</b> | <b>LG</b> | <b>LG</b> |  |  |  |  |  |  |

**LG** - Lagerartikel - Preise auf Anfrage

**Werkstoff: Stahl** - Stahl entsprechend Normvorschrift  
auch V2A und V4A am Lager

WWW.GLOBEX-GMBH.DE

WWW.GLOBEX-GMBH.DE

WWW.GLOBEX-GMBH.DE

WWW.GLOBEX-GMBH.DE

WWW.GLOBEX-GMBH.DE

WWW.GLOBEX-GMBH.DE

WWW.GLOBEX-GMBH.DE