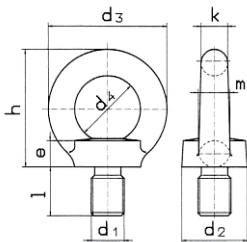


# Ringschrauben

lifting eye bolts

# DIN 580



Regelgew. d 1	Feingew. d 1	d2	d3	d4	e	h	l	LG Regelgew.	LG Feingew.	WW- Gewinde	LG WW-Gew.	V2A V4A
<b>M 6</b>								<b>LG</b>		1/4"	<b>LG</b>	
<b>M 8</b>	M 8 x 1	20	36	20	6	36	13	<b>LG</b>		5/16"	<b>LG</b>	<b>LG</b>
<b>M 10</b>	M 10 x 1	25	45	25	8	45	17	<b>LG</b>				<b>LG</b>
<b>M 12</b>	M 12 x 1,5	30	54	30	10	53	20,5	<b>LG</b>		3/8"	<b>LG</b>	<b>LG</b>
<b>M 14</b>								<b>LG</b>		1/2"	<b>LG</b>	
<b>M 16</b>	M 16 x 1,5	35	63	35	12	62	27	<b>LG</b>	<b>LG</b>			<b>LG</b>
<b>M 18</b>	M 18 x 2							<b>LG</b>		5/8"	<b>LG</b>	<b>LG</b>
<b>M 20</b>	M 20 x 2	40	72	40	14	71	30	<b>LG</b>	<b>LG</b>	3/4"	<b>LG</b>	
<b>M 22</b>								<b>LG</b>		7/8"	<b>LG</b>	
<b>M 24</b>	M 24 x 2	50	90	50	18	90	36	<b>LG</b>	<b>LG</b>	1"	<b>LG</b>	<b>LG</b>
<b>M 27</b>	M 27 x 2	50	90	50	18	90	36	<b>LG</b>		1 1/8"	<b>LG</b>	
<b>M 30</b>	M 30 x 2	65	108	60	22	109	45	<b>LG</b>	<b>LG</b>	1 1/4"	<b>LG</b>	
<b>M 33</b>		65	108	60	22	109	45	<b>LG</b>		1 1/2"	<b>LG</b>	
<b>M 36</b>	M 36 x 3	75	126	70	26	128	54	<b>LG</b>	<b>LG</b>	1 5/8"	<b>LG</b>	
<b>M 39</b>	M 39 x 3	75	126	70	26	128	54	<b>LG</b>	<b>LG</b>	1 3/4"	<b>LG</b>	
<b>M 42</b>	M 42 x 3	85	144	80	30	147	63	<b>LG</b>	<b>LG</b>	2"	<b>LG</b>	
<b>M 45</b>		85	144	80	30	147	63	<b>LG</b>		2 1/2"	<b>LG</b>	
<b>M 48</b>	M 48 x 3	100	166	90	35	168	68	<b>LG</b>	<b>LG</b>			
<b>M 52</b>	M 52 x 3	100	166	90	35	168	68	<b>LG</b>				
<b>M 56</b>	M 56 x 4	110	184	100	38	187	78	<b>LG</b>	<b>LG</b>			
<b>M 64</b>	M 64 x 4	120	206	110	42	208	90	<b>LG</b>	<b>LG</b>			
<b>M 72</b>	M 72 x 4	150	260	140	50	260	100	<b>LG</b>	<b>LG</b>			
<b>M 80</b>	M 80 x 4	170	296	160	55	298	112	<b>LG</b>	<b>LG</b>			
<b>M 100</b>	M 100 x 4	190	330	180	60	330	130	<b>LG</b>	<b>LG</b>			

**LG** - Lagerartikel - Preise auf Anfrage

**Werkstoff: C 15**

**Werkstoff: V2A** - 1.4301 oder 1.4305

**V4A** - 1.4401 oder 1.4571

WWW.GLOBEX-GMBH.DE